



alfalite[®]

LED DISPLAYS

Litepix[®] series

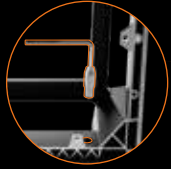


THE LED SCREEN OF CHOICE
FOR RENTAL SPECIALISTS

www.alfalite.com

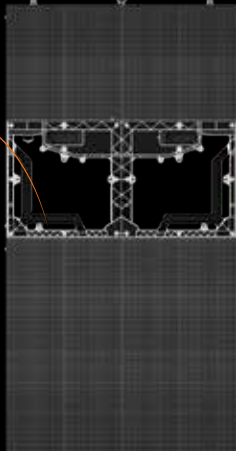
FAST-LOCKS FOR RENTAL COMPANIES

- Top main lock and fast side lock (2 locks vs 4/6)
- Top removable positioners
- Retractable side positioner



Top removable positioners

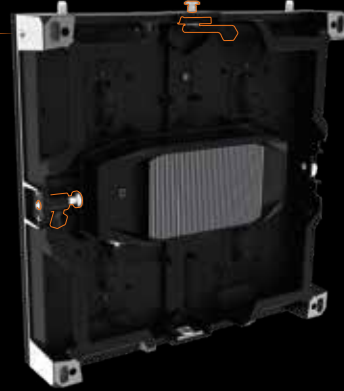
It allows panel changes without dismantling the screen



Retractable side positioner



Hammer Closures



FAST AND ACCURATE

Enhanced mechanical properties
Unparalleled flat surface

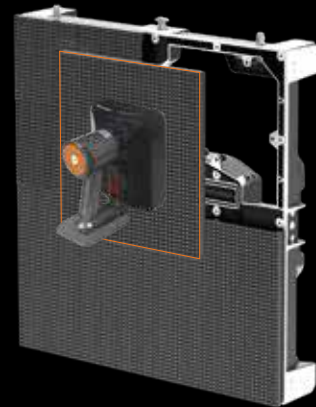
EASY AND FAST MAINTENANCE

- Front and rear maintenance
- No tools required
- Fast and accurate installation and dismantling
- MOM: Module replacement with unified calibration



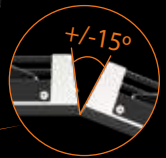
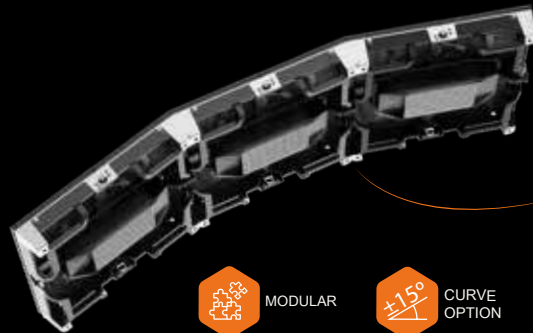
EASY MAINTENANCE

Chassis handles can be used as a ladder



MODULAR AND VERSATILE DESIGN

- Neutrik connectors
- Concave/convex curve $\pm 15^\circ$
- Aluminium or Magnesium alloy Cabinets
- ORIM[®] (Optical Resin Injection Module)



MODULAR



CURVE OPTION



PCB

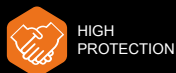
- 4/6 Layers
- Gold surface treatment
- Technical RoHS marking. UL Certification.

ORIM[®]

- Easy to clean with enhanced protection against hits and humidity
- Highest protection against static electricity. ESD > 10KV
- < 0,02 mm pinpoint accuracy/space between modules
- Fire resistance parameters. UL94-0 compliant



INHOUSE DESIGN AND MANUFACTURING



HIGH PROTECTION



LIGHTWEIGHT CHASSIS

SMART PANEL

- Preemptive and remote maintenance
 - Temperature and humidity
 - Data/video connectors
 - Sending and receiving card control
- Remote monitoring and control
 - External elements
 - Color and brightness parameters
 - Refresh rate (Hz)



EUROPEAN MANUFACTURER 4.0

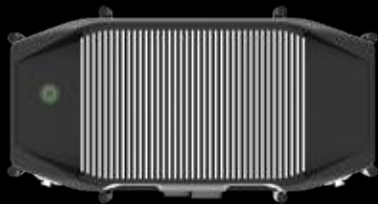
- Mechanical and electronic industrial design
 - Design tools for CAD and 3D
 - AR simulation (Augmented reality)
- PCB Manufacture. In-house SMD production lines
 - Traceability
 - Control system and automation
 - Measurements for BIG DATA
- LEAN Manufacturing methodology

Quality, Reliability, Durability



SMART POWERBOX

- Powerbox Status display
 - Status Report database collection, Data/video
 - Main/Back-up signal state



No fans-Noise Free
Wireless FA, HUB and modules
Heat dissipation by free convection

ALFALITEWOW
COLOR/BRIGHTNESS ALFALITE CUSTOMISED CALIBRATION



#openyoureyes
#wearealfalite



INSTALLATION ACCESSORIES

STACK SYSTEM



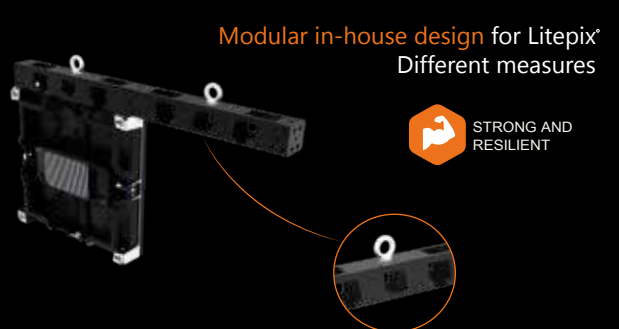
Versatile inhouse design for Litepix

- Safety bars
- Platform option
- Weight supports



DRAG and DROP installation

HANGING BAR



Modular in-house design for Litepix
Different measures



FLOOR APPLICATIONS



Polycarbonate
Tempered Glass
Interactive and you can step on it



TRANSPORTATION/SHIPPING



Flight cases by Alfalite
The highest protection
Lightweight

CUTTING EDGE TECHNOLOGY, DESIGNED TO THRILL

PRODUCT SPECIFICATIONS

	LITEPIX OUTDOOR SERIES			LITEPIX INDOOR SERIES			
MODEL	LITEPIX 3+	LITEPIX 4+	LITEPIX 5+	LITEPIX 1i	LITEPIX 2 Pro	LITEPIX 2i	LITEPIX 3i
PIXEL PITCH (mm)	3.9	4.8	5.9	1.9	2.6	2.9	3.9
PANEL RESOLUTION (pixels)	128 x 128	104 x 104	84 x 84	256 x 256	192 x 192	168 x 168	128 x 128
MODULE RESOLUTION (pixels)	64 x 64	52 x 52	42 x 42	128 x 128	96 x 96	84 x 84	64 x 64
PANEL SIZE (mm)	500 x 500			500 x 500			
PIXEL CONFIGURATION	RGB 3 ON 1 SMD			RGB 3 ON 1 SMD			
MODULE SIZE (mm)	250 x 250			250 x 250			
PANEL WEIGHT (kg) Aluminium/Magnesium	8.9/7.8			8.9/7.8			
BRIGHTNESS (cd/m ²)	5.000			1.300			
REFRESH RATE (Hz)	3.840			3.840			
IP PROTECTION LEVEL (rear/front)	IP65 outdoor			IP22 indoor			
AVERAGE POWER CONSUMPTION (W/panel)	30			65			
LIFESPAN (hours)	100.000			100.000			
CURVE VERSION (2,5° steps)	-15°/+15°			-15°/+15°			

CERTIFICATIONS   

* Technical specifications are flexible and can be modified in accordance with the project requirements.

** EMC and RoHS certifications exceed the normal values.

ALFALITE
PROFESSIONAL MEDIA TECHNOLOGIES S.L.U.

P.I. Doña Paca. C/ Zalema, 2.
21720 Rociana del Condado
Huelva. SPAIN.

Website: www.alfalite.com
info@alfalite.com
Telf. 959 41 73 71

