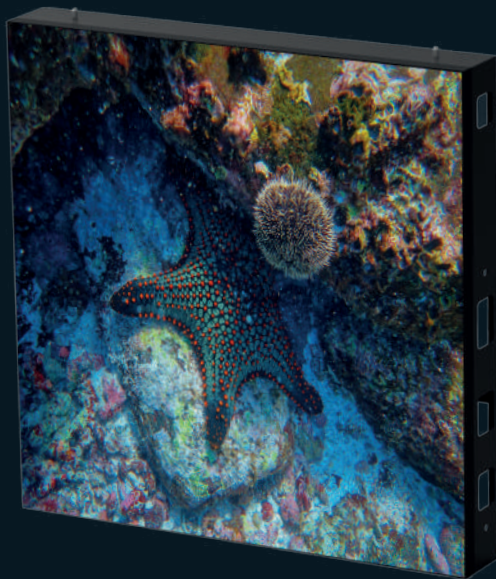




alfalite[®]

LED DISPLAYS

ODSX[®] Series



LED PANEL FOR OUTDOOR FIXED
INSTALLATIONS (DOOH), ADVERTISING,
SPORTS LEDS, TRANSPORT AND ENTERTAINMENT

www.alfalite.com

MULTIFUNCTIONAL ODSX[®]

MULTIFUNCTIONAL

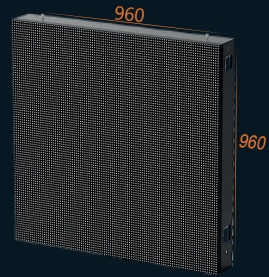
- Fast and accurate installation
- Multifunctional Led Screen
- Pixel to pixel calibration



Safety lock provides better connection



Uniform Calibration = High quality



HIGH PERFORMANCE

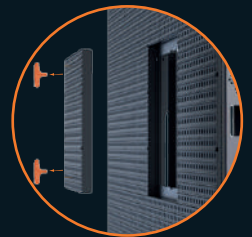
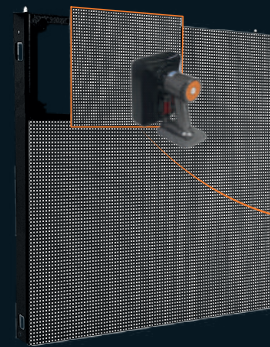
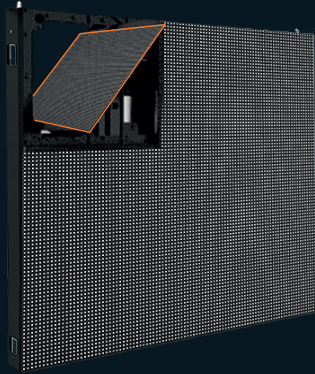
- No Fans; Noise Free. Heat dissipation by free convection
- Continuous image and cleaner appearance
- Lower power consumption



MAINTENANCE: EASY AND FAST

Special service and maintenance

- Rear and Front service; modules and power box
- One by one components repair
- No disruptive change module

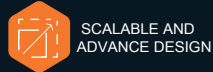
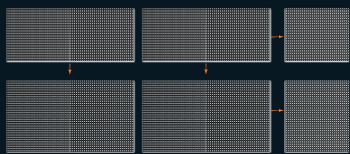


Mechanical Accuracy

VERSATILE LED PANEL. APPLICATIONS

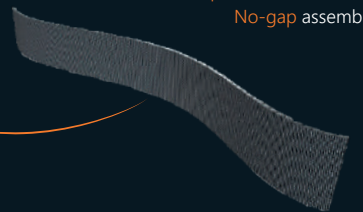
Straight Screens

Versatile led panel to create different screens sizes
Specially designed for Retail, Corporate and Entertainment markets



Curved LED screen option

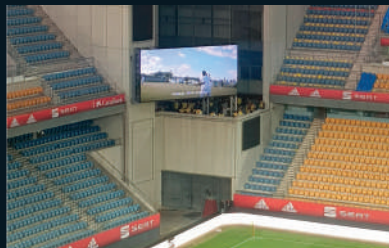
- Installation Option: concave curve assembly
- Unparalleled flat surface
- No-gap assembly



Pylons



Scoreboards



Mupis



LED Perimeters banners



Advertising/Leisure



Transports



SMART PANEL

- Preemptive and remote maintenance
 - Temperature and humidity
 - Data/video connectors
 - Sender and receiver control cards

EUROPEAN MANUFACTURER 4.0

- Mechanical and electronic industrial design
 - Design tools for CAD and 3D
 - AR simulation (Augmented reality)
- PCB Manufacture. Inhouse SMD production lines
 - Traceability
 - Measurements for BIG DATA
 - Control system and automation
- LEAN Manufacturing methodology

SMART POWERBOX

- Powerbox Status display
 - Status Report database collection, Data/video
 - Main/Back-up signal state
- Remote monitoring and control
 - External elements
 - Color and brightness value
 - Refresh rate (Hz)

Quality, Reliability, Durability

ALFALITEWOW

COLOR/BRIGHTNESS ALFALITE®
CUSTOMISED CALIBRATION



#openyoureyes
#wearealfalite

DISPLAY
CONFIGURATION
REMOTE PANEL



Calibration

Brightness

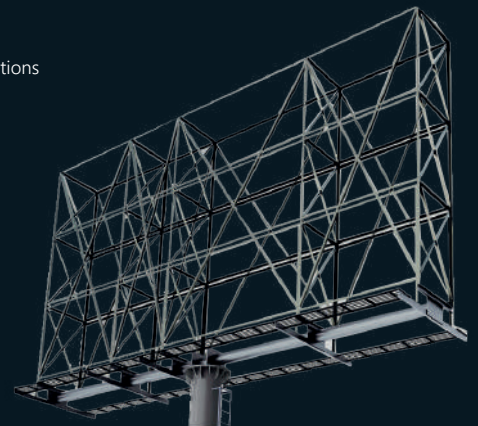
Monitoring

Control

SPECIAL PROTECTION TO OUTDOOR ADVERTISING

CABINET TESTED FOR A BETTER PERFORMANCE

- Special protection for outdoor advertising:
 - Excelent waterproof and high performance security. Designed and tested to withstand salty environment conditions
 - Module designed and tested against dust, water and others harsh weathers conditions. Robust mask IP54/64
 - High quality images in broad daylight (6.000-7.000 nits), and during the night using light sensors
 - Stainless screws, overlapping salt surface treatment
 - Installed option without protective covers



VERSATILE



STRONG AND
RESILIENT



HIGH
PROTECTION

CUSTOMISED STRUCTURE

- Design tools for CAD and 3D
 - Steel structure UNE-EN 10025 S275JR, on hot-rolled laminated profiles
 - Structure made with a perimetral closing on galvanized material
 - Laser cutting method; more accurate dimensions and inserts
 - Finished paint with priming anti-rust

CUTTING EDGE TECHNOLOGY, DESIGNED TO THRILL

PRODUCT SPECIFICATIONS

ODSX SMD [®]							
MODEL	ODSX 3	ODSX 4	ODSX 5	ODSX 6	ODSX 8	ODSX 10	ODSX 16
PIXEL PITCH (mm)	3.9	4.8	5.9	6.6	8	10	16
PANEL RESOLUTION(px)	128 x 256	104 x 208	84 x 168	144 x 144	120 x 120	96 x 96	60 x 60
PIXEL DENSITY (px/m ²)	65.536	43.264	28.224	22.500	15.625	10.000	3.906
PANEL SIZE (mm)	500 x 1.000/500	500 x 1.000/500	500 x 1.000/500	960 x 960	960 x 960	960 x 960	960 x 960
PANEL WEIGHT (kg)	16	16	16	30	30	30	30
BRIGHTNESS (cd/m ²)	5.000	5.000	5.500	6.500	6.500	6.500	6.500
REFRESH RATE (Hz)	3.840	3.840	3.840	1.920	2.400	1.920	1.920
VIEW ANGLE	160°/160°	160°/160°	160°/160°	140°/120°	160°/100°	160°/100°	160°/100°
SERVICE TEMPERATURE (°C)	-30°~+50°	-30°~+50°	-30°~+50°	-30°~+50°	-20°~+50°	-20°~+50°	-20°~+50°
IP PROTECTION LEVEL (Front/Rear)	IP54/65 OUTDOOR						
LIFESPAN (hours)	100.000						
SERVICE HUMIDITY (%)	10 ~ 90						
PIXEL CONFIGURATION	RGB 3 IN 1 SMD						

CERTIFICACIONES   

* Technical specifications are flexible and can be modified in accordance with the project requirements

** EMC and RoHS certifications exceed the normal values



P.I. Doña Paca. C/ Zalema, 2.
21720 Rociana del Condado
Huelva. SPAIN.

Website: www.alfalite.com
info@alfalite.com
Telf. 959 41 73 71



@Alfalite



Alfalite.led



alfalite.led



Alfalite