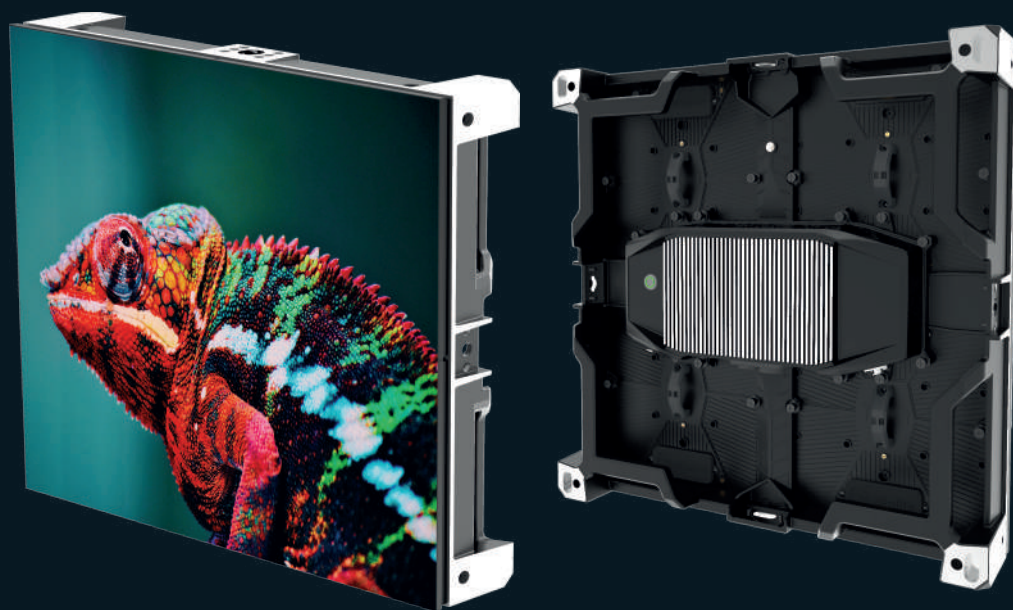




alfalite[®]

LED DISPLAYS

Modularpix[®] Series

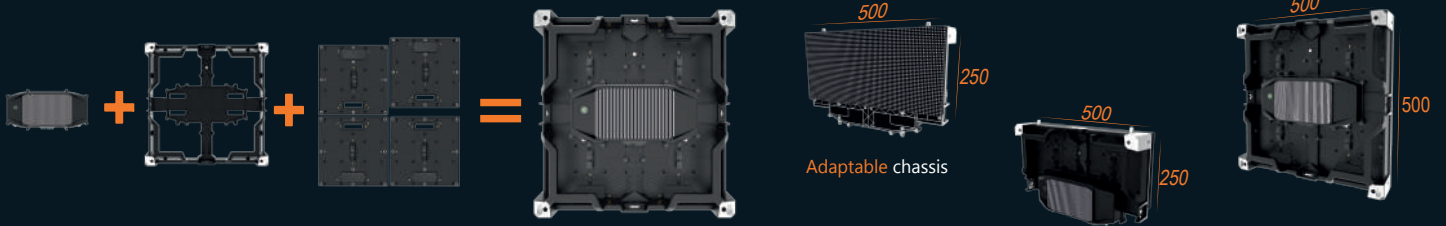


LED PANEL FOR CHALLENGING FIXED INSTALLATIONS.
ENTERTAINMENT, BROADCAST, CORPORATE AND RETAIL.

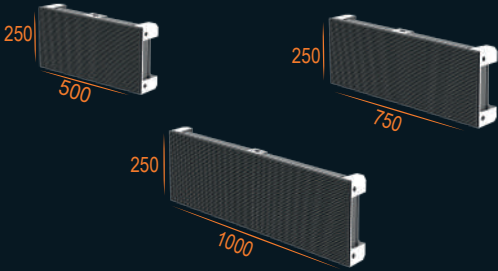
www.alfalite.com

MODULAR DESIGN

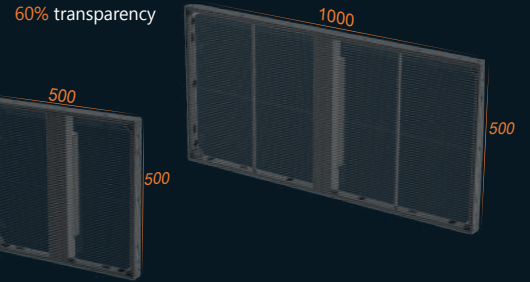
MODULARPIX® PRO



MODULARPIX® LITE



MODULAR® CRISTALPIX



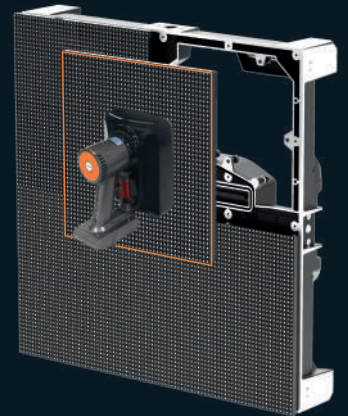
EASY AND FAST MAINTENANCE

- Front and rear maintenance
- No tools required
- Fast and accurate installation
- MOM: Module replacement with unified calibration

- QUICK AND ACCURATE
- EASY MAINTENANCE
- LIGHTWEIGHT

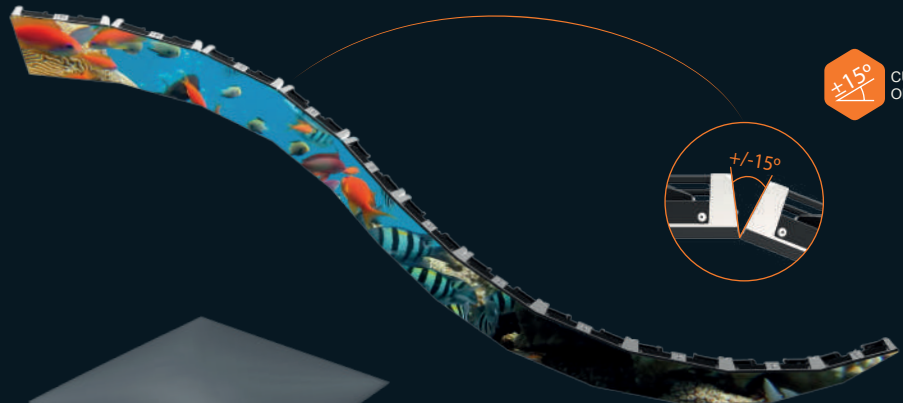
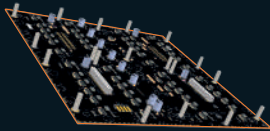


Chassis handles can be used as a ladder



MODULARPIX® PRO: VERSATILE DESIGN

- Aluminum or Magnesium led cabinets
- Concave/convex curve option $\pm 15^\circ$
- ORIM (Optical Resin Injection Module)



$\pm 15^\circ$ CURVE OPTION

PCB

- 4/6 Layers
- Gold surface treatment
- Technical RoHS marking, UL certification

ORIM®

- Easy to clean with enhanced protection against hits and humidity
- Highest protection against static electricity. ESD > 10KV
- < 0,02 mm pinpoint accuracy/space between modules
- Fire resistance parameters. UL94-0 compliant

SMART PANEL

- Preemptive and remote maintenance
 - Temperature and humidity
 - Data/video connectors
 - Sending and receiving card control
- Remote monitoring and control
 - External elements
 - Color and brightness parameters
 - Refresh rate (Hz)



EUROPEAN MANUFACTURER 4.0

- Mechanical and electronic industrial design
 - Design tools for CAD and 3D
 - AR simulation (Augmented reality)
- PCB manufacture. In-house SMD production lines
 - Traceability
 - Control system and automation
 - Measurements for BIG DATA
- LEAN Manufacturing methodology

Quality, Reliability, Durability HIGH RESIDUAL VALUE

SMART POWERBOX

- Powerbox Status display
 - Status Report database collection, Data/video
 - Main/Back-up signal state



No Fans-Noise Free
Wireless FA, HUB and modules
Heat dissipation by free convection

ALFALITEWOW
COLOR/BRIGHTNESS ALFALITE CUSTOMISED CALIBRATION



#openyoureyes
#wearealfalite



INSTALLATION ACCESSORIES

STACK SYSTEM



VERSATILE

DRAG and DROP installation

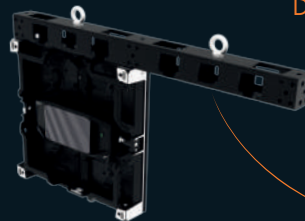


Set/floor customised stacking system

- Safety bars
- Platform option
- Weight supports

HANGING BAR

Designed for Modularpix®Series
Different measures



STRONG AND RESILIENT



FLOOR APPLICATIONS

Polycarbonate
Tempered Glass
Interactive and you can step on it



FLED FLOOR

CUSTOM INSTALLATION

Custom structure/metal framing
Stack system
Wall mount



CUTTING EDGE TECHNOLOGY, DESIGNED TO THRILL

PRODUCT SPECIFICATIONS

SERIE ALFALITE MODULARPIX®

| MODEL | MODULARPIX PRO HB | | | MODULARPIX PRO | | | | | MODULARPIX LITE | | | MODULARPIX CRISTAL | |
|---------------------------------------|-----------------------|-----------|---------|-----------------------|-----------|-----------|-----------|-----------|---------------------|-----------|--------------|--------------------|------------|
| PIXEL PITCH (mm) | 3.9 | 4.8 | 5.9 | 1.5 | 1.9 | 2.6 | 2.9 | 3.9 | 1.9 | 2.6 | 3.9 / HB | 3.9 x 7.8 | 7.9 x 7.8 |
| PANEL RESOLUTION (px) | 128 x 128 | 104 x 104 | 84 x 84 | 160 x 160 | 128 x 128 | 96 x 96 | 84 x 84 | 64 x 64 | 512* x 128 | 384* x 96 | 256* x 64 | 256 x 64 | 126 x 64 |
| MODULE RESOLUTION (pixel) | 64 x 64 | 52 x 52 | 42 x 42 | 320 x 320 | 256 x 256 | 192 x 192 | 168 x 168 | 128 x 128 | 128 x 128 | 96 x 96 | 64 x 64 | 128 x 32 | 63 x 32 |
| PANEL SIZE (mm) | 500 x 500 / 500 x 250 | | | 500 x 500 / 500 x 250 | | | | | 500/750/1000* x 250 | | | 500/1000 x 500 | 1000 x 500 |
| PIXEL CONFIGURATION | RGB 3 IN 1 SMD | | | RGB 3 IN 1 SMD | | | | | RGB 3 IN 1 SMD | | | RGB 3 IN 1 SMD | |
| MODULE SIZE (mm) | 250 x 250 | | | 250 x 250 | | | | | 250 x 250 | | | - | - |
| PANEL WEIGHT (kg) Aluminium/Magnesium | 8.9/7.8 | | | 8.9/7.8 | | | | | 4.0/5.1/6.3 | | | 4.5/7.0 | 12 |
| BRIGHTNESS (cd/m ²) | 5.000 | | | 1.900 | | | | | 1.000 | 1.000 | 1.000 / 3000 | 4.000 | 3.500 |
| REFRESH RATE (Hz) | 3.840 | | | 4.440 | | | | | 3.840 | | | 1.920 | 1.920 |
| IP PROTECTION (Frontal/Trasero) | IP54 | | | IP22 | | | | | IP40 | | | IP20 | IP30 |
| AVERAGE POWER CONSPITION (W/panel) | 45 | | | 35 | | | | | 30 | | | 125 | 125 |
| LIFESPAM (horas) | 100.000 | | | 100.000 | | | | | 100.000 | | | 100.000 | 100.000 |
| CURVED VERSION (2,5° steps) | -15°/+15° | | | -15°/+15° | | | | | - | | | - | - |

CERTIFICATIONS

* Technical specifications are flexible and can be modified in accordance with the project requirements.

** EMC and RoHS Certifications exceed the normal values.

*** The resolution for ModularPix Pro show 500 x 500 size. The resolution for ModularPix Lite show 1000 x 250 size.



P.I. Doña Poca. C/ Zalema, 2.
211720 Rociana del Condado
Huelva, SPAIN.

Website: www.alfalite.com
info@alfalite.com
Telf. 959 41 73 71



@Alfalite



Alfalite.led



alfalite.led



Alfalite